



# RIPON CHRISTIAN SCHOOLS

ESTABLISHED 1928

## HIGH SCHOOL PROFILE

2024-2025

Ripon Christian High School is one of the oldest established Christian high schools in the San Joaquin Valley. Located approximately 90 miles east of San Francisco, 65 miles south of Sacramento, and 75 miles west of the Sierra Nevada Mountains, Ripon is a large agricultural community. Although the institution was founded in 1928, RCHS was established in 1946 and continues to provide a Christ-centered, liberal arts education for children from Christian families. The high school student body is composed of 280 students very evenly divided between males (52%) and females (48%). There are 24 full-time staff and 4 part-time staff as well as a librarian, a school counselor, and a biblical counselor. Fourteen of our staff members hold master's degrees. The average class size is 20 and the teacher-student ratio is 10:1. Although it accepts students of all ability levels, Ripon Christian High School offers a comprehensive program that is strongly college preparatory.

### 10:1 STUDENT - TEACHER RATIO

280 Highschool Students

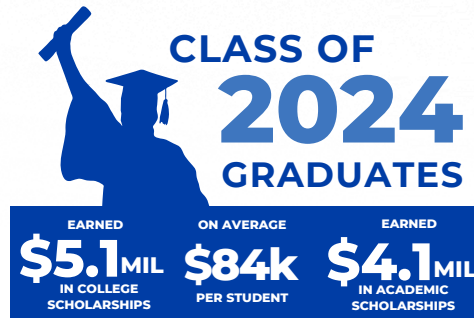


Ripon Christian students are highly involved in extra-curricular activities with over 94% participating in at least one interscholastic opportunity. Boys and girls are able to choose from a wide variety of sports, music, educational, and leadership opportunities throughout the school year.

## GRADUATION REQUIREMENTS

### RCHS GRADUATION REQUIREMENTS - 250 CREDITS

|                  |            |
|------------------|------------|
| English          | 40 Credits |
| Social Studies   | 30 Credits |
| Math             | 30 Credits |
| Science          | 30 Credits |
| Bible            | 20 Credits |
| Foreign Language | 20 Credits |
| PE/Health Ed     | 25 Credits |
| Fine Arts        | 10 Credits |
| Electives        | 45 Credits |



### ATHLETICS

High School

15 Athletic Opportunities

Freshmen, JV, & Varsity Levels

### FINE ARTS PROGRAMS

13 Courses Offered



### SERVICE

As Ripon Christian strives to mold students who are well-rounded academically and personally, a service requirement is mandatory for all students. Each semester students are required to complete 10 hours of service. The student body fulfills this graduation requirement in a number of ways by volunteering in their church, local communities or mission trips nationally and abroad.

## GRADING SCALE

|        |    |      |       |    |      |
|--------|----|------|-------|----|------|
| 100-95 | A  | 4.00 | 76-73 | C  | 2.00 |
| 94-90  | A- | 3.47 | 72-70 | C- | 1.67 |
| 89-87  | B+ | 3.33 | 69-67 | D+ | 1.33 |
| 86-83  | B  | 3.00 | 66-63 | D  | 1.00 |
| 82-80  | B- | 2.67 | 62-60 | D- | 0.67 |
| 79-77  | C+ | 2.33 | 59-   | F  | 0.00 |

## AP COURSES & HONORS

35 OUT OF 38 TESTS TAKEN (92%) EARNED A PASSING SCORE OF 3 OR HIGHER.

- |                          |                               |
|--------------------------|-------------------------------|
| AP United States History | AP Environmental Science      |
| AP Spanish               | Honors Anatomy and Physiology |
| AP Pre-Calculus          | AP English 12 - Lit & Comp    |
| AP Calculus - AB/BC      | Honors English 11             |

## RIPON CHRISTIAN

### ADMINISTRATION

Mr. Eric Segaar  
Superintendent

Mr. Kevin Tameling  
Dean of Students

Ms. Mari Schuller  
Guidance Counselor



[www.rcschools.com](http://www.rcschools.com)



(209) 599-2155



435 N. Maple Ave.  
Ripon, Ca 95366

CEEB CODE - 052648



Ripon Christian Schools is a member of CSI and CAPSO. Ripon Christian Schools is accredited K-12 by the Western Association of Schools and Colleges (WASC) and Christian Schools International (CSI).

# COLLEGE CHOICES

Approximately 80% of graduates attend four-year colleges and about 17% attend two-year colleges and technical schools with 9 percent of these students planning on transferring to a four-year college or university. Ripon Christian graduates have been accepted by a wide range of schools and universities including:

## PRIVATE COLLEGES & UNIVERSITIES

Abilene Christian College  
Azusa Pacific University  
Belmont University  
Biola University  
California Baptist University  
Calvin University  
College of the Holy Cross  
Concordia University, CA  
Concordia University, MN  
Concordia University, NE  
Concordia University, OR  
Concordia University, TX  
Corban College  
Cornerstone University  
Covenant College  
Dallas Baptist University  
Dordt University  
Fresno Pacific University  
George Fox University  
Gordon College  
Grand Canyon University  
Hawaii Pacific University  
Hope College  
Houghton College  
Le Tourneau University  
Liberty University  
Master's College  
Mid America Nazarene University  
Northwestern College  
Northwest Nazarene University  
Pacific Union College  
Palm Beach Atlantic University  
Pepperdine University  
Point Loma University  
Providence College  
Seattle Pacific University  
Simpson College  
St. Olaf College  
Texas Christian College  
Trinity Christian College  
Union College  
Vanguard University  
Weaton College  
Westminster University, UT  
Westmont College  
Whitworth College  
Wittenberg College

## CA STATE COLLEGES & UNIVERSITIES

CSU Chico  
CSU East Bay  
CSU Fresno  
CSU Hayward  
CSU Humboldt  
CSU Monterey Bay  
CSU Los Angeles  
CSU Sacramento  
CSU San Diego  
CSU San Francisco  
CSU San Jose  
CSU Sonoma  
CSU Stanislaus  
California Polytechnic, Pomona  
California Polytechnic, SLO  
Santa Clara University  
Stanford University  
UC Berkeley  
UC Davis  
UC Irvine  
UC Los Angeles (UCLA)  
UC Merced  
UC Riverside  
UC San Diego  
UC Santa Barbara  
UC Santa Cruz  
University of the Pacific (UOP)  
University of San Diego

## OTHER STATE COLLEGES & UNIVERSITIES

Arizona State University  
Baylor University  
Black Hills University  
Boise State University  
Boston College  
Bowling Green University  
Brown University  
Case Western Reserve University  
Carnegie Mellon University  
Colorado School of Mines  
Colorado State University  
Cottey College  
Fashion Institute of Design & Merch (FIDM)  
Harvard  
Indiana University, Bloomington  
Kettering University  
Louisiana State University  
Michigan State University  
Montana State University  
New Jersey Institute of Technology  
Oklahoma State University  
Oregon State University  
Princeton University  
Purdue University, West Lafayette  
Rensselaer Polytechnic Institute  
Rose Hulman School of Technology  
Rutgers University  
St. John's University  
SUNY, Buffalo  
Temple University  
Texas A&M  
Texas Southern University  
Texas Tech University  
Tulane University  
University of Arizona  
University of Central Florida  
University of Florida  
University of Hawaii  
University of Indiana  
University Mary-Hardin Baylor  
University of Miami  
University of Nevada, Reno  
University of North Carolina  
University of North Dakota  
University of Puget Sound  
University of Washington  
University of Wyoming  
Ursinus College  
Vassar College  
Villanova University  
Virginia Commonwealth University  
Virginia Intermont  
Virginia Military Institute